

# MALD-MLD-MGLD

- Easy detachable non-drive side end cover and rotor assembly
- Compact design
- Substantial construction
- Pressure surge proof up to 10 bar g
- Large range of options available
- Sheared angle inlet
- Air purge shaft seals optional
- Flange drillings available to PN 10, ANSI 150 lbs and JIS standards
- Direct Bonfiglioli or SEW drive (optional chain drive)
- Ideal for inverter control
- Versions conforming to ATEX 94/9/EC available



MALD

MLD

MGLD

## MALD, MLD and MGLD air locks

The MALD, MLD and MGLD valves have been developed for applications where valves with outboard bearings would be over specified. The valves give exceptional value for money due to the simplified construction and direct drive. The basic construction of the three valves is the same, with the exception of the bodies.

The valves are suited for both conveying and metering purposes. They are ideal for vacuum conveying applications, Big bag unloading, cyclone applications and general purpose applications.

	MLD	MALD	MGLD
Sizes	7	7	4
Capacity range*	0.8-58	0.8-58	5-32

\* litre per revolution at 100 % filling

## Product information

The valves are available in three materials of construction: cast iron, aluminium and stainless steel. The cast iron valves are also available nickel or chrome plated or tungsten coated.

The standard rotor has 8 fixed blades. Various rotor configurations are optionally available, such as adjustable blades, reduced capacity, scalloped, staggered, etc.

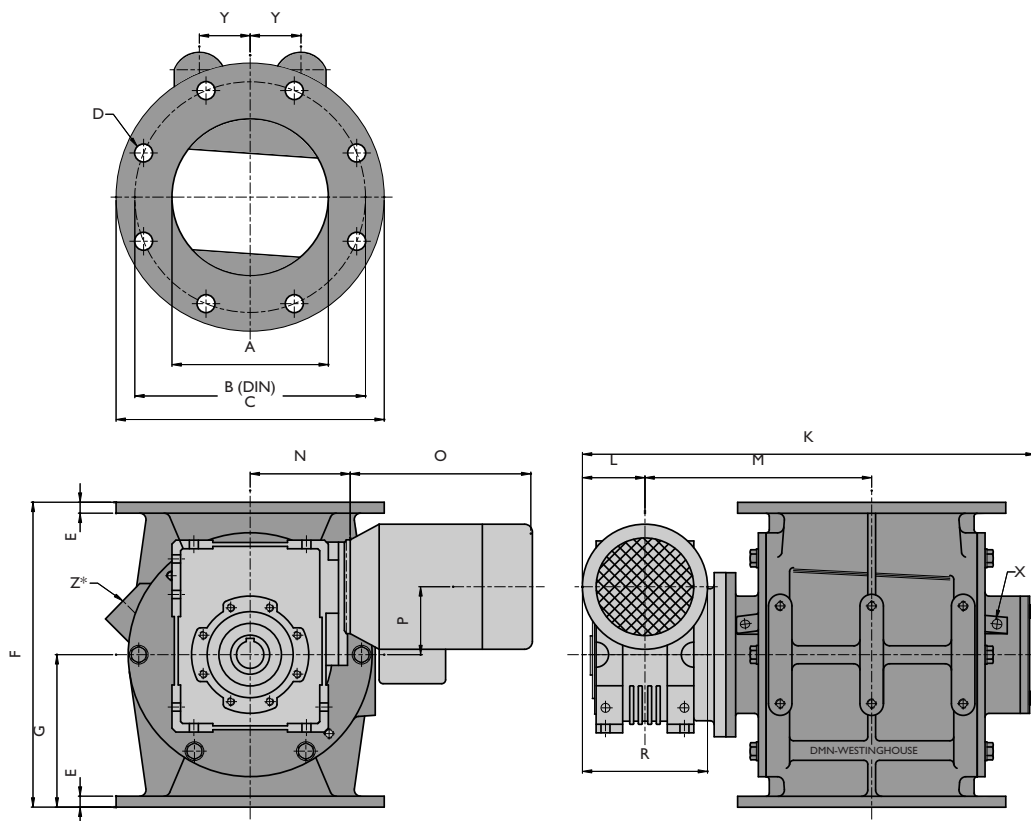
The end covers have inboard ball bearings. The shaft sealing is by means of lipseals, with the option of air purge.

The standard models are suitable for handling products up to a temperature of 70 °C, optional to 140 °C, and a maximum pressure differential of 1.5 bar. The valves are pressure shock resistant up to 10 bar g pressure.

# MALD

Technical modifications are possible, dimensions in mm

MALD.M.01.14.E



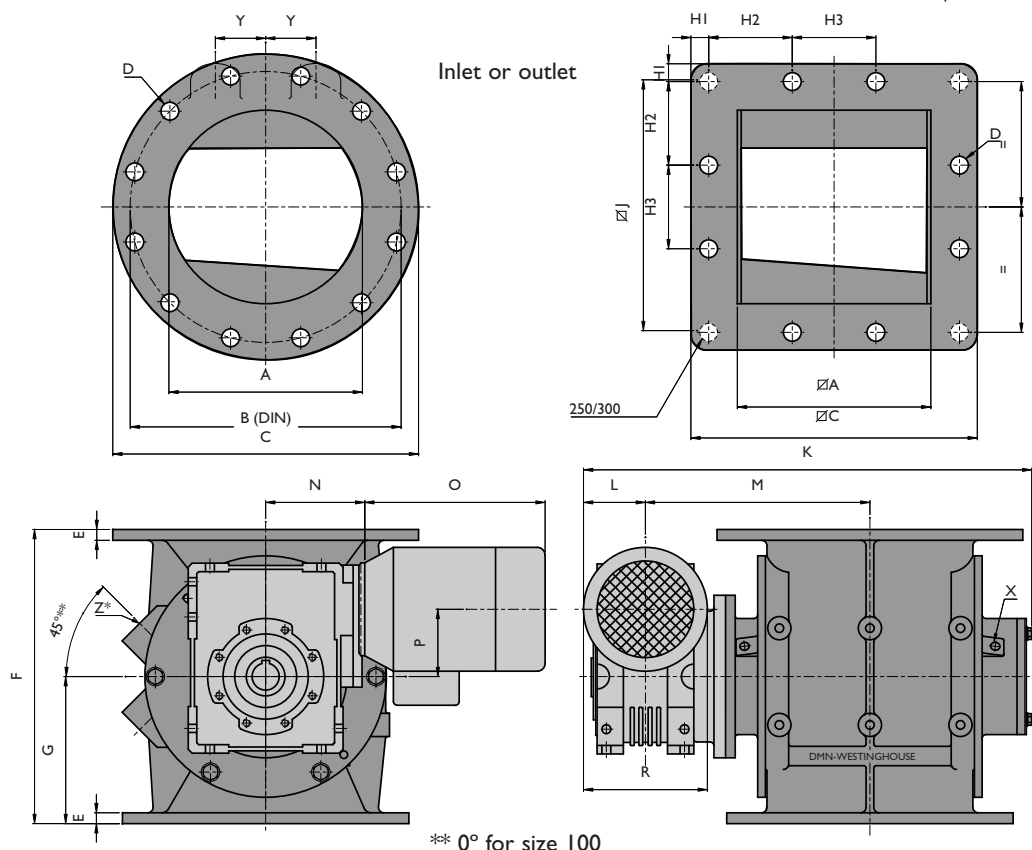
Type MALD	Ltr/rev	ØA	ØB	ØC	D	E	F	G	K	L	M	N	O	P	R	X	Y	Z*
100	0,8	100	170	210	4xØ18	10,5	180	90	368	69	181	60	229	49	137	1/8"	-	-
150	2,5	150	240	285	8xØ23	12	280	140	455	69	226	95	213	65	138	1/4"	40	3/4"
175	5,5	175	270	315	8xØ23	14	330	165	505	80	245	112	230	75	160	1/4"	53	1"
200	10,5	200	295	343	8xØ23	14	390	195	594	95	290	128	258	87	190	1/4"	65	1 1/4"
250	19	250	350	406	12xØ23	16	450	225	644	95	315	128	258	87	190	1/4"	75	1 1/4"
300	34	300	400	483	12xØ23	21	540	270	777	107	388	143	298	110	213	3/8"	95	1 1/2"
350	58	350	460	530	16xØ23	26	660	330	847	107	423	143	298	110	213	3/8"	112	1 1/2"

Type MALD	Type Bonfiglioli	≥Nm
100	VF49	70
150	W63	145
175	W72	145
200	W86	215
250	W86	290
300	W110	360
350	W110	510

\* Standard pre-drilled for cast iron

## MALD

The MALD valve utilises the AL-valve body which has two round flanges and is suitable for powders. This valve is suitable for many applications where a valve with outboard bearings would be over specified.



\*\* 0° for size 100

Type MLD	Ltr/rev	ØA	ØA	ØB	ØC	ØC	D	E	F	G	H1	H2	H3	ØJ	K	L	M	N	O	P
100	0,8	100	100	170	210	175	4xØ18	10,5	170	85	20	135	—	135	368	69	181	60	229	49
150	2,5	150	150	240	285	267	8xØ23	11	275	138	88	92	—	222	455	69	226	95	213	62
200	5,5	200	200	295	340	320	8xØ23	14	325	163	104	113	—	273	505	80	245	112	230	75
250	10,5	250	250	350	395	370	12xØ23	14	380	190	23	108	108	324	594	95	290	128	258	87
300	19	300	300	400	483	445	12xØ23	21	450	225	31	128	128	384	644	95	315	128	258	87
350	34	350	350	460	530	530	16xØ23	21	540	270	109	104	104	460	777	107	388	143	298	110
400	58	400	400	515	595	595	16xØ23	26	660	330	125	115	115	515	847	107	423	143	298	110

Type MLD	R	X	Y	Z*	Type Bonfiglioli	$\geq Nm$
100	137	1/8"	—	1/2"	VF49	70
150	138	1/4"	40	3/4"	W63	145
200	160	1/4"	53	1"	W72	145
250	190	1/4"	65	1 1/4"	W86	215
300	190	1/4"	75	1 1/4"	W86	290
350	213	3/8"	95	1 1/2"	W110	360
400	213	3/8"	112	1 1/2"	W110	510

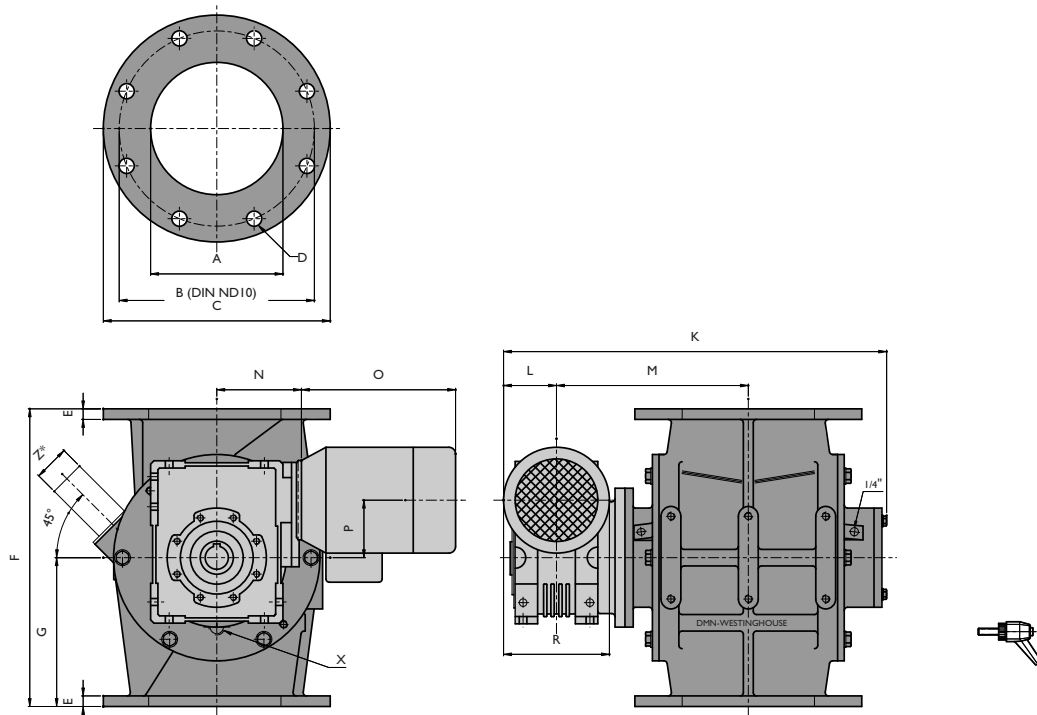
\*Vent openings standard not pre-drilled

## MLD

The MLD valve is based on the ML-valve body and is suitable for handling powders. The valve has one round flange and one square flange, both of which are one size larger than the MALD for the same rotor capacity. By this the valve has a large inlet in relation to the rotor volume, so that high filling efficiencies are reached with free flowing products. The valve can also be used as a transition piece from round to square or vice versa.

# MGLD

Technical modifications are possible, dimensions in mm MGLD.M.01.14.D



Type MGLD	Ltr/rev	ØA	ØB	ØC	D	E	F	G	K	L	M	N	O	P	R	X	Z*
150	5	150	240	285	8xØ23	12	360	180	505	80	245	112	230	75	160	3/8"	Ø48,3x2
200	10	200	295	343	8xØ23	16	450	225	594	95	290	128	258	87	190	1/2"	Ø60,3x2
250	17,5	250	350	406	12xØ23	18	500	250	644	95	315	128	258	87	190	1/2"	Ø76,1x2
300	32	300	400	483	12xØ23	23	600	300	777	107	388	143	298	110	213	3/4"	Ø88,9x2

Type MGLD	Type Bonfiglioli	≥Nm
150	W72	145
200	W86	215
250	W86	290
300	W110	360

\* Vent hole

## MGLD

The MGLD valve is based on the GL-valve body and is suitable for granular products, definitely not for powders. The valve has a large air vent opening. Degradation of the conveyed product has been minimised by the configuration of the body and rotor, whilst optimal pocket filling efficiency is still attained. The full end disc rotor is made of 316 stainless steel.

DMN-WESTINGHOUSE have been designing and manufacturing rotary valves, diverter valves and other related components for the bulk solids handling industry for more than 30 years. Offering tailor made solutions for chemical, food, plastics and pharmaceutical industries, DMN-WESTINGHOUSE products are distributed worldwide. Besides an extensive range of standard components, we supply USDA accredited sanitary versions and ATEX approved explosion-proof models.

An extensive network of subsidiaries, distributors and representatives ensures a high level of service and support all over the world.

### Head Office:

**DMN Machinefabriek Noordwykerhout BV**  
P.O. Box 6, NL - 2210 AA Noordwijkerhout, Holland  
Tel. +31 252 361 800  
Fax +31 252 375 972/934  
dmn@dmn-nwh.nl

**DMN Incorporated**  
3895 South Perkins Road, Suite 8  
Memphis, TN 38118, USA  
Tel. +1 901 360 1537  
Fax +1 901 360 0348  
dmnfo@dmn-inc.com

**DMN Schüttguttechnik GmbH**  
Rütgersstrasse 8  
D-21244 Buchholz i.d. Ndh, Germany  
Tel. +49 4181 931 40  
Fax +49 4181 931 490  
dmn@dmn-schuettingtechnik.de

**DMN UK Ltd**  
Unit 1&2, Harris Road,  
Porte Marsh Industrial Estate  
Calne, Wiltshire, SN 11 9PT, UK  
Tel. +44 1249 818 400  
Fax +44 1249 818 410  
dmn@dmnuk.com

**DMN France SAS**  
65, rue Charles de Gaulle  
91330 Yerres, France  
Tel: +33 1 69 49 85 70  
Fax: +33 1 69 49 85 79  
dmnfrance@wanadoo.fr

© DMN - HOLLAND - 04/05



www.dmn.info

**DMN**  
WESTINGHOUSE