

**When Ordering,
Please Specify
Type of Material:**

- Carbon
- Stainless
- Aluminum
- Galvanized Steel

Inlet Valves

Heavy duty inlet valves provide for a quick connection of the male hose coupling to the vacuum cleaning system. These parts are designed for insertion into a 2" FNPT threaded fitting adapting to a 2-1/8" tube size. Valves have self-closing covers and are available in galvanized and stainless steel, as well as nickel plated models. Escutcheon plates allow for a more attractive wall installation.

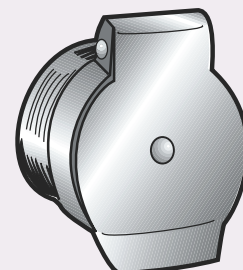
The same body is used for all three valves...only the bore varies. IV-150 and IV-200 use a slight taper for hose adapter retention. IV-200-CLIP and IV-180 utilize a clip on the valve lid for retention instead. Hose adapters are constructed of heavy-duty galvanized steel.

Inlet Valves

BORE	MNPT	PART NO.
1.5"	2.0"	IV-150
1.8"	2.0"	IV-180
2.0"	2.0"	IV-200
2.0"	2.0"	IV-200-CLIP

Escutcheon Plates

TYPE	PART NO.
Zinc	10253
Stainless	23939
Nickel	25079

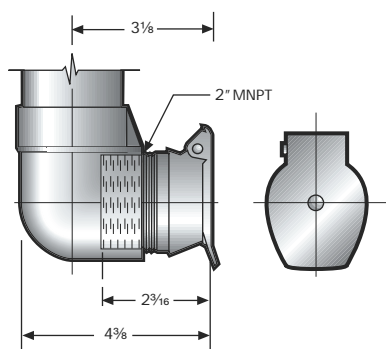


Inlet Valve

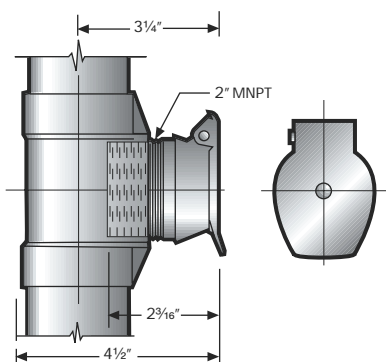
(For use with open tubing or when a flush mounting is not required)

Valve Accessories for Installation & Operation

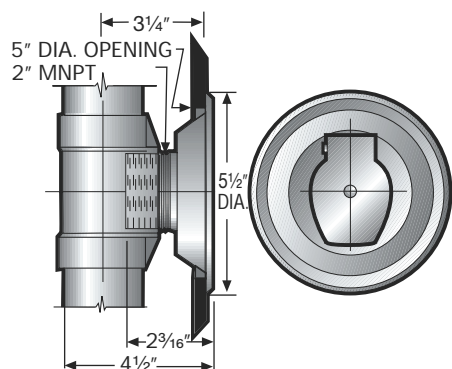
HOSE ADAPTER PART NO.	FOR HOSE SIZE	INLET VALVE PART NO.	WRENCH PART NO.
HA-150	1-1/2" ID	IV-150 accepts 1-1/2" OD Hose Adapter	VW-150
HA-180	1-1/2" ID	IV-180 accepts 1.8" OD Hose Adapter	VW-180
HA-200	2" ID	IV-200 accepts 2" OD Hose Adapter	VW-180
HA-200-RING	2" ID	IV-200-CLIP accepts 2" OD Hose Adapter	VW-180



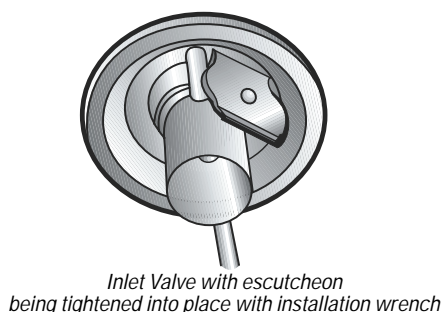
Valve shown in 90° adapter elbow (Part No. AE-211)



Valve shown in tube fitting (Part No. AT-212)



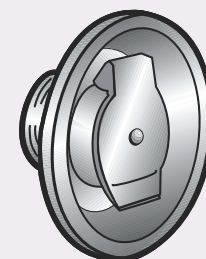
Valve with escutcheon and tee fitting.
Can also be used with 90° adapter elbow



Inlet Valve with escutcheon
being tightened into place with installation wrench

KEY

FNPT = Female National Pipe Thread
MNPT = Male National Pipe Thread



Inlet Valve with escutcheon
(For a flush mounted installation)

Floor Valves

Our floor valve is a convenient alternative when wall valves aren't possible. It's built to resist wear and tear, even in heavy traffic areas.

The valve cap is easily removed, but remains flush with the body when not in use. Available in bronze and nickel-plated. Please call customer service for pricing.

